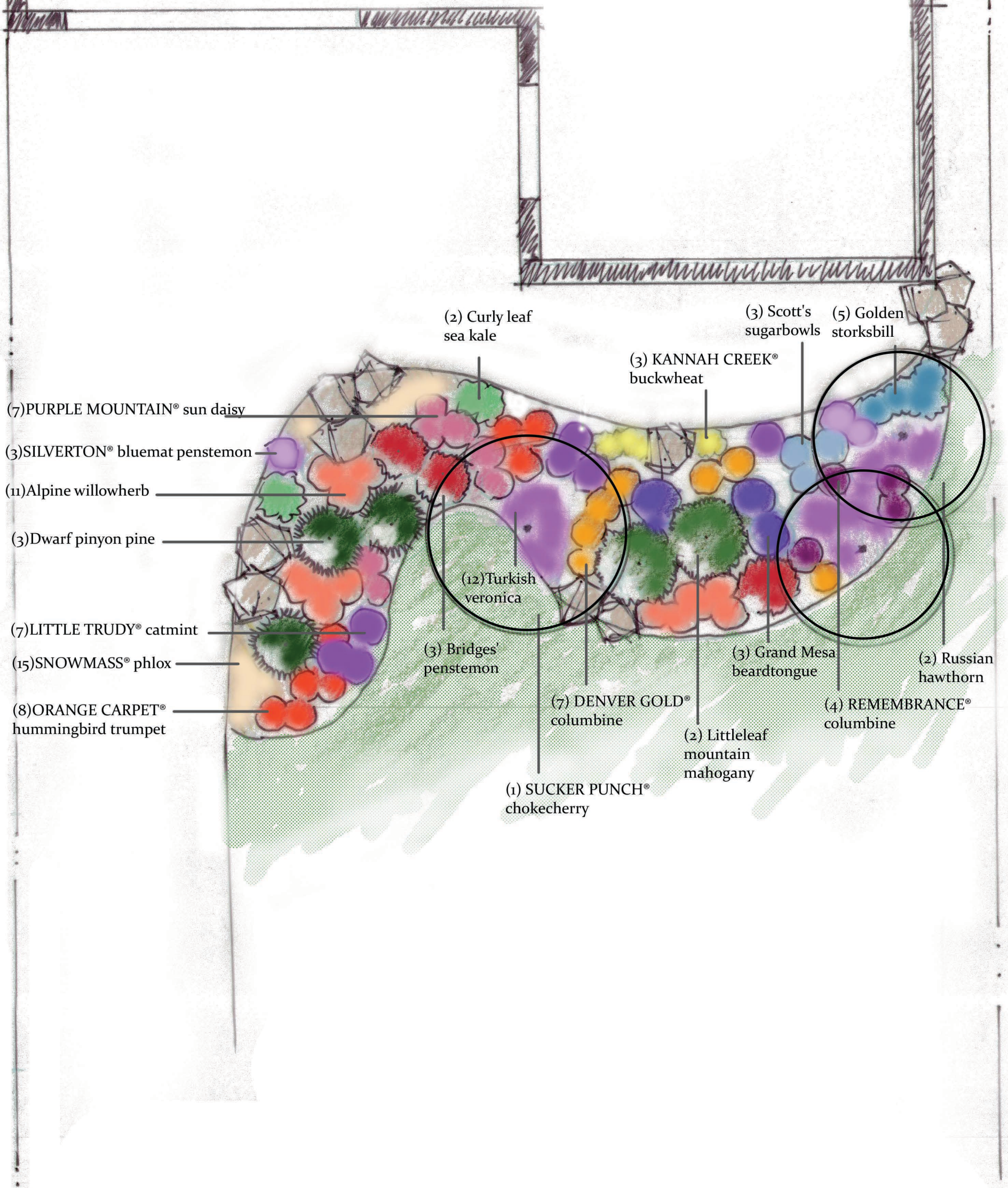


Plant Select®
plant smarter

DENVER BOTANIC GARDENS

Design by Annie Barrow, Manager of
Horticulture Outreach Programs
annie.barow@botanicgardens.org



HIGH ELEVATION DESIGN (UP TO 8125')

SCALE: 1/4" = 1'
Full Sun exposure

HIGH ELEVATION PLANTING DESIGN - FRONTYARD 11' x 17'

This high elevation planting design offers a wide variety of year round texture, spring, summer and fall color plus winter interest for landscapes up to 8125'.



PLANT LIST: Common Name

PURPLE MOUNTAIN® sun daisy (7)
SILVERTON® bluemat penstemon (3)
Alpine willowherb (11)
Dwarf pinyon pine (3)
LITTLE TRUDY® catmint (7)
SNOWMASS® phlox (15)
ORANGE CARPET® hummingbird trumpet (8)
Bridges' penstemon (3)
Turkish veronica (12)
DENVER GOLD® Columbine (7)
SUCKER PUNCH® chokecherry (1)
Littleleaf mountain mahogany (2)
Grand Mesa beardtongue (3)
REMEMBRANCE® columbine (4)
Russian hawthorn (2)
Curly leaf sea kale (2)
KANNAH CREEK® buckwheat (3)
Scott's sugarbowl (3)
Golden storksbill (5)

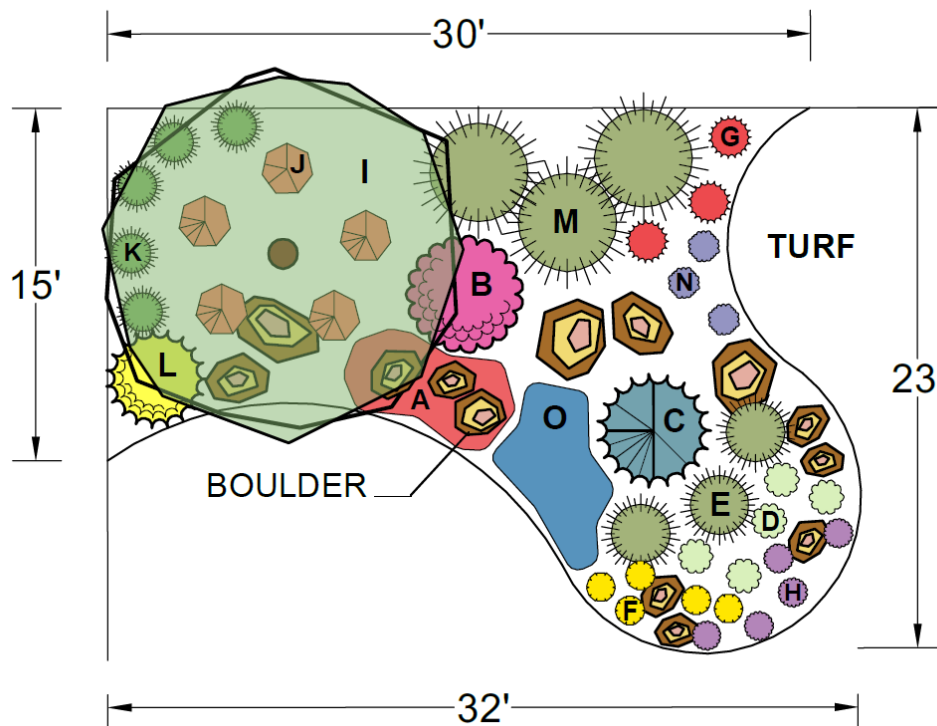
PLANT LIST: Botanic name

Osteospermum barberiae var. compactum 'P005S' (7)
Penstemon linarioides ssp. coloradoensis 'P014S' (3)
Epilobium fleischeri (11)
Pinus edulis (3)
Nepeta 'Psfike' PP 18,904 (7)
Phlox bifida (15)
Zauschneria garrettii 'PWWG01S' (8)
Penstemon rostriflorus (3)
Veronica liwanensis (12)
Aquilegia chrysantha (7)
Prunus 'P002S' PP25,767 (1)
Cercocarpus intricatus (2)
Penstemon mensarum (3)
Aquilegia 'Swan Violet & White' (4)
Crataegus ambigua (2)
Crambe maritima (2)
Eriogonum umbellatum var. aureum 'Psdawns' (3)
Clematis scottii (3)
Erodium chrysanthum (5)

Visit www.PlantSelect.org/where-to-buy/ to source Plant Select plants or email Director@PlantSelect.org with questions. Designed by: Annie Barrow Manager, Horticulture Outreach Programs annie.barrow@botanicgadens.org

FOUR SEASON SENSATION

This garden represents a partial conversion of lawn to garden. Reshaping the existing lawn using a curvilinear approach adds flow and movement. Ornamental and coniferous trees provide height, shade and winter interest without interfering excessively with the views. This once water-hogging space is now a lush garden with plants that provide four season beauty, color and interest; thrive in low-water, clay soil and full sun conditions; and attract butterflies and hummingbirds. Drip irrigation and organic mulch, along with proper plant selection, aid in long-term water conservation.



PLANT LIST: All plants are Plant Select® plants

- A.** Fire Spinner™ Ice Plant **-or-** Lavender Ice Ice Plant (7)
- B.** Ruby Voodoo Rose **-or-** Redleaf Rose (1)
- C.** Weeping White Spruce (1)
- D.** Avalanche White Sun Daisy **-or-** Golden Storksbill (5)
- E.** Blonde Ambition Blue Grama Grass **-or-** Korean Feather Reed Grass (3)
- F.** Colorado Gold® gazania **-or-** Chocolate Flower (5)
- G.** Red Birds in a Tree **-or-** Bridges' Penstemon (3)
- H.** Valley Lavender® Plains Verbena **-or-** Winecups (5)
- I.** Russian Hawthorn **-or-** Hot Wings® Tatarian Maple (1)
- J.** Orange Carpet® Hummingbird Trumpet (5)
- K.** Korean Feather Reed Grass (5)
- L.** Spanish Gold Broom **-or-** Baby Blue Rabbitbrush (1)
- M.** Giant Sacaton (3)
- N.** Little Trudy® Catmint **-or-** Shadow Mountain® Penstemon (3)
- O.** Crystal River® Veronica **-or-** Turkish Veronica (5)



Designer Tanya Fisher

President of Colorado Vista Landscape Design, Inc. since 2003, Tanya Fisher provides high quality and sustainable landscape design plans and horticulture consulting for residential, community and commercial landscapes in the northern Colorado region.

ColoradoVista@comcast.net

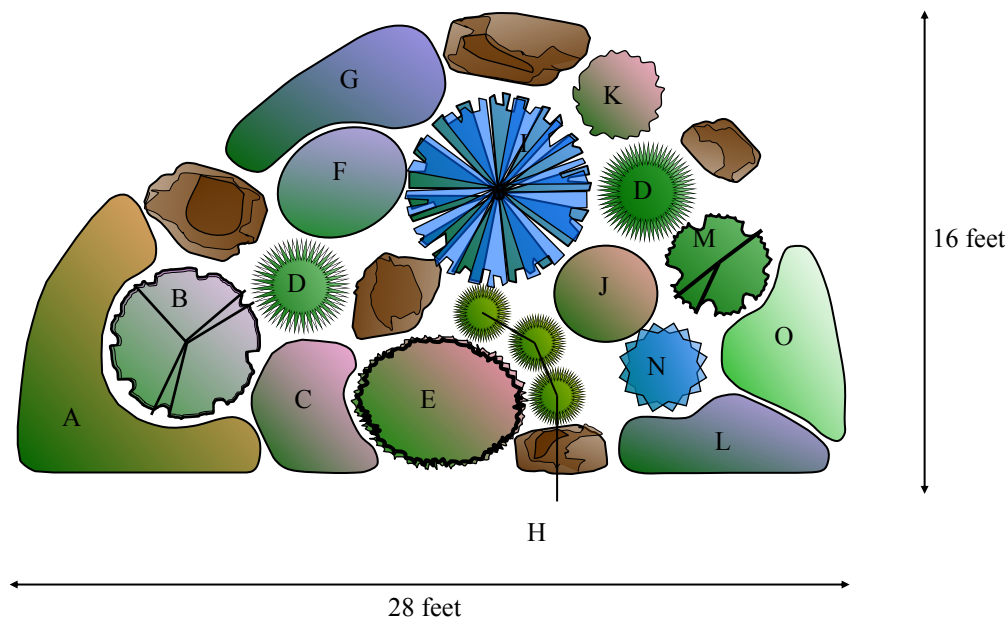
www.ColoradoVista.com

Windsor, CO (970) 231-3088

**Find more and inspiration
at plantselect.org!**

ROCK GARDEN

This raised xeriscape garden is in full sun and visible from all sides. The boulders, native grasses and “evergreen” plants, Bluestem Joint Fir, Mock Bearberry and Parry’s Century Plant, give this garden plenty of winter texture and interest. A native Cowboy’s Delight (*Sphaeralcea coccinea*) meanders thru the garden. Spring bulbs of Tete A Tete Daffodils, Crocus, and small species tulips add extra bloom time, and TABLE MOUNTAIN® ice plant will bloom in November on our warm ‘Indian Summer’ days.



PLANT LIST:

Plant Select® plants are in bold

- A. **ORANGE CARPET®** Hummingbird Trumpet -or- ‘Angelina’ Sedum
- B. **PAWNEE BUTTES®** Sand Cherry -or- ‘Powis Castle’ Artemisia
- C. **TABLE MOUNTAIN®** Ice Plant -or- **MESA VERDE®** Ice Plant
- D. Stipa Feather Grass -or- Blue Oat Grass
- E. ‘Winter Glow’ Prickly Pear Cactus -or- Colorado hedgehog cactus
- F. Variegated Iris -or- German Iris
- G. **Corsican Violet** -or- **COLORADO GOLD®** Gazania
- H. Colorado Blue Grama Grass -or- ‘Boulder Blue’ Blue Fescue
- I. **Bluestem Joint Fir** -or- **SPANISH GOLD®** Broom
- J. **RED ROCKS®** Penstemon -or- Rocky Mountain Penstemon
- K. **MONGOLIAN BELLS®** Clematis -or- Furman’s Red Sage
- L. **Turkish Veronica** -or- **CRYSTAL RIVER®** Veronica
- M. **Mock Bearberry** Manzanita -or- Crimson Pygmy Barberry
- N. Parry’s Century Plant -or- Pale-leaf Yucca
- O. Lamb’s Ear ‘Helene von Stein’ (Big Ears) -or- **Sea Foam Artemisia**

Shalene Hiller received her bachelor degree from Colorado State University Landscape Design Program. She has worked all facets of the Industry from design to perennial production to maintenance. She is currently Horticultural Specialist for the City of Westminster. You can see her gardens at Legacy Ridge and The Heritage at Westmoor Golf Courses.

Find more designs and inspiration at
plantselect.org!